

Ten favourite flowers for small gardens to attract Honey Bees



Hellebore species and hybrids
Helleborus Niger (Christmas Rose) and *H. orientalis* (lenten rose) are popular. Tolerant of most conditions, they prefer moist, well drained alkaline soil in dappled shade. They can grow well in pots.



Galanthus nivalis common snowdrop. A delicate little flower bravely flowering in early Spring, often covered in snow, but a vital source for pollen and nectar.



Salvia species
Choose the right one for your garden. They can be pruned in the spring and look striking in a border. Salvias are sun-loving plants and good drainage is essential for the survival of almost all salvias.



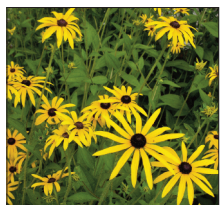
Crocus species (winter-flowering)
Delightful splashes of vibrant colour in spring, easy to grow and look beautiful in containers or in groups on a lawn. An early source of pollen for the bees



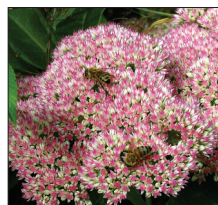
Echinacea
A good choice is *Echinacea purpurea*. This daisy like flower is a long-flowering border perennial which is easy to grow. It is an excellent plant for pollinators, rich in nectar through late summer and autumn.



Cosmos
Cosmos are very easy to grow and have edible flowers. simply scatter the seeds and these freely flowering annual plants will spring up. A good choice is *Cosmos bipinnatus*.



Rudbeckia laciniata
Striking larger plant with tall upright stems, divided foliage and many single yellow flowers in late summer. Easy to grow if given full sun or partial shade and a moderately fertile soil that is moist but well-drained.



Sedum species
There are many varieties of sedum plants, which make them suitable for almost all types of gardens. Sedums are hardy, easy to care for and make great cut flowers. *Sedum spectabile*, 'ice plant', is a good choice.



Lavandula species
Lavender angustifolia is a good choice and a superb plant for introducing vibrant colour and scent into a garden. Lavender is ideal for a mixed border, but it also makes a fantastic edging plant. Lavender really needs sun, well-drained soil and dislikes wet, especially in the winter.



Verbena species
Verbena will thrive in full sun, well drained soil and relatively dry conditions. *Verbena officinalis* is a good choice for long lasting blooms during the summer. It has tall, fragrant flowers on rigid stems and will attract many pollinators.

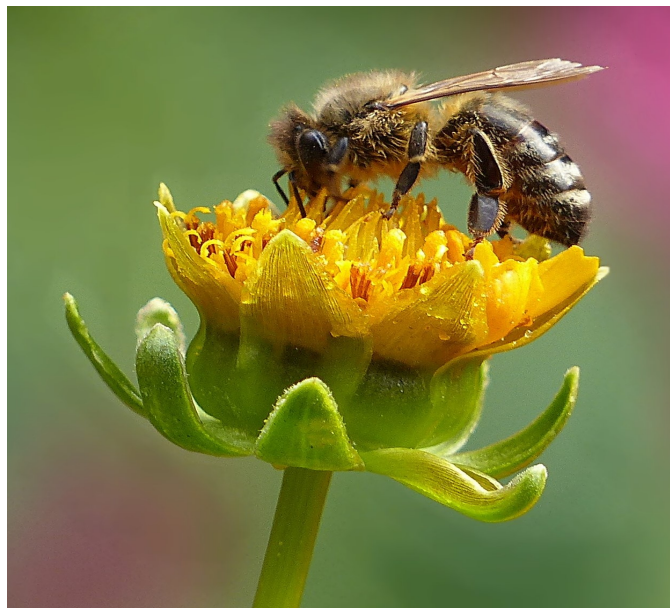
You may only have a small garden but there are flowers you can plant to help our bees throughout the year. Many of the hedgerows and verges have disappeared and parts of the countryside are like green deserts with very few wild flowers. Bees need pollen and nectar to supply them with protein and carbohydrates. Small rural and urban gardens can offer a great food source for all our pollinators and still look superb. Choose plants with single, open flowers for easy access to the pollen and nectar.

For a more extensive list of plants, please visit our website www.bbka.org.uk

Why our Honey Bees need your support...

Our mission is to champion Honey Bees and the importance of the craft of Beekeeping.

The British Beekeepers' Association (BBKA) was founded in 1874 as a national umbrella organisation for beekeeping associations and represents the interests of 29,000+ hobby beekeepers. We are a UK registered charity governed by a board of Trustees.



The BBKA's charitable objects are:

- ◆ To further and promote the craft of beekeeping
- ◆ To advance the education of the public in the importance of bees in the environment.

We achieve this by promoting the enjoyment and appreciation of Beekeeping and by nurturing young people in the importance of bees and other vital pollinating insects. Learning and participation are at our core, through our educational projects, lectures and workshops, and our outreach education programme where people of all ages can 'have a go' at keeping honey bees. We are committed to the importance of beekeeping for the benefit of all.

In addition to our educational activities, the BBKA

- ◆ Sits on Defra Boards to represent the needs of beekeepers and honeybees
- ◆ Applied scientific research projects are funded by our members
- ◆ Raises the profile of beekeeping amongst young people by working with schools, colleges and local community groups
- ◆ Advises government on their Pollinators' Strategy

How you can help

At School

Why not encourage your local schools to get involved either as a beekeeping school or a school committed to understanding the role of bees in the environment. For lots of ideas visit the Junior Beekeeping section of our website.

At Work

We have lots of ways for companies to get involved, either through corporate partnership, sponsorship or through one off donations. Email bbka@bbka.org.uk for more information.

A gift in your Will

A recent gift has helped develop our educational work and through this generous donation we will be inspiring a new generation of beekeepers and custodians of our environment by offering school visits to our Apiary Garden and Education Centre at Stoneleigh.

We realise making a gift in your will is a huge decision and independent legal advice should always be sought. However, there are many ways to leave a gift, big or small, and it will help us with our ongoing commitment to reach new beekeepers.

Donation

We can now accept donations by text. Please visit our website for further details: www.bbka.org.uk/make-a-donation

Or, quite simply **DONATE** through our website to one of the many projects we are working on. Research is crucial and we are keen to develop our research programme.

For more details of how you can help, please visit bbka.org.uk/make-a-donation - Thank you!



© June 2022

British Beekeepers' Association,
National Beekeeping Centre,
Stoneleigh Park,
Kenilworth,
Warwickshire CV8 2LG

Email: bbka@bbka.org.uk
www.bbka.org.uk

Registered Charity No: 1185343